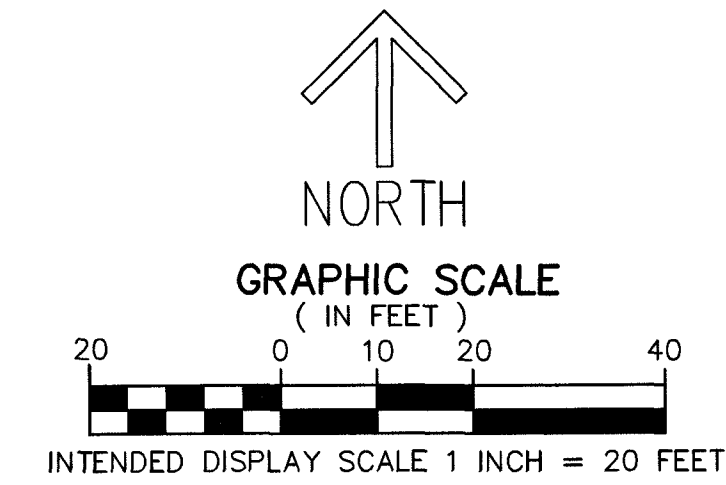


92 AND 93 ISLAND DRIVE SOUTH

BEING A REPLAT OF LOTS 2 AND 3, ISLAND DRIVE SOUTH ESTATES, RECORDED IN PLAT BOOK 122, PAGES 112 AND 113, OF THE PUBLIC RECORDS OF PALM BEACH COUNTY, FLORIDA, BEING IN SECTION 22, TOWNSHIP 45 SOUTH, RANGE 43 EAST, TOWN OF OCEAN RIDGE, PALM BEACH COUNTY, FLORIDA.

THIS INSTRUMENT PREPARED BY
DAVID P. LINDLEY
OF
CAULFIELD & WHEELER, INC.
SURVEYORS - ENGINEERS - PLANNERS
7900 GLADES ROAD, SUITE 100
BOCA RATON, FLORIDA 33434 - (561)392-1991

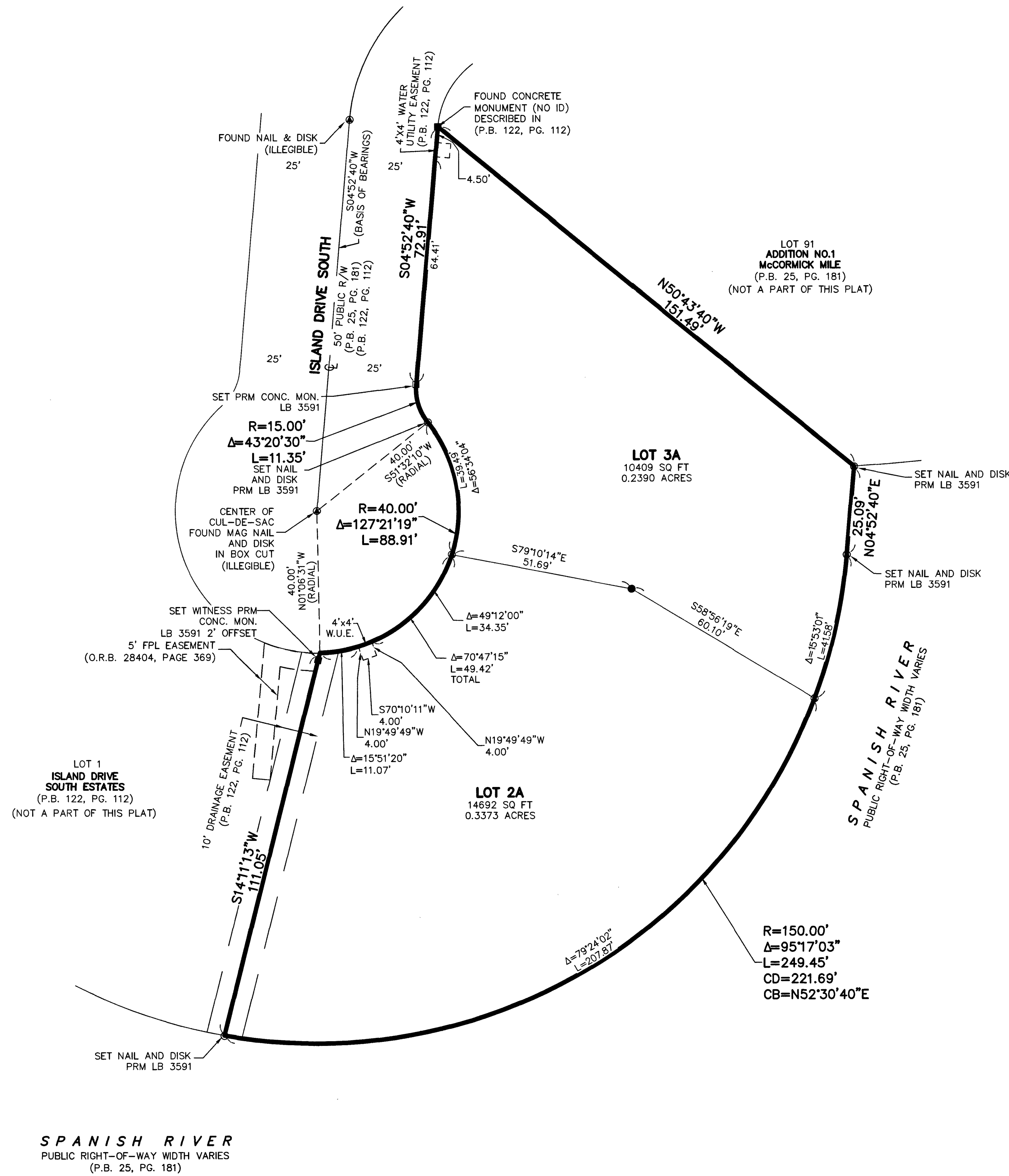


193

SHEET 2 OF 2

SURVEYOR & MAPPER'S NOTES:

- BUILDING SETBACK LINES SHALL BE AS REQUIRED BY CURRENT THE TOWN OF OCEAN RIDGE ZONING REGULATIONS.
- BEARINGS SHOWN HEREON ARE RELATIVE TO A GRID BEARING OF S04°52'40"W ALONG THE WELL ESTABLISHED CENTERLINE OF ISLAND DRIVE SOUTH, ISLAND DRIVE SOUTH ESTATES, ACCORDING TO THE PLAT THEREOF, AS RECORDED IN PLAT 122, PAGE 112, OF THE PALM BEACH COUNTY, FLORIDA, RELATIVE TO THE FLORIDA STATE PLANE COORDINATE SYSTEM, EAST ZONE, TRANSVERSE MERCATOR PROJECTION, NORTH AMERICAN DATUM OF 1983 (1990 ADJUSTMENT).
- RECORDING INFORMATION SHOWN HEREON IS IN THE PUBLIC RECORDS OF PALM BEACH COUNTY, FLORIDA.
- ALL LINES INTERSECTING CIRCULAR CURVES ARE NON-RADIAL, UNLESS OTHERWISE NOTED.
- THE TOWN OF OCEAN RIDGE IS HEREBY GRANTED THE RIGHT OF ACCESS FOR EMERGENCY AND MAINTENANCE PURPOSES.



NOTICE: THIS PLAT, AS RECORDED IN ITS GRAPHIC FORM, IS THE OFFICIAL DEPICTION OF THE SUBDIVIDED LANDS DESCRIBED HEREIN AND WILL IN NO CIRCUMSTANCES BE SUPPLANTED IN AUTHORITY BY ANY OTHER GRAPHIC OR DIGITAL FORM OF THE PLAT. THERE MAY BE ADDITIONAL RESTRICTIONS THAT ARE NOT RECORDED ON THIS PLAT THAT MAY BE FOUND IN THE PUBLIC RECORDS OF PALM BEACH COUNTY.

LEGEND, ABBREVIATIONS AND SYMBOLS

- | | |
|--|--|
| Δ - DELTA (CENTRAL ANGLE) | ● NAIL AND DISK, STAMPED "PRM LB 3591" |
| CB - CHORD BEARING | ■ PRM - PERMANENT REFERENCE |
| CD - CHORD DISTANCE | ■ MONUMENT, STAMPED LB 3591 |
| CONC. MON. - CONCRETE MONUMENT | ● SET IRON ROD AND CAP, LB 3591 |
| FPL - FLORIDA POWER & LIGHT | |
| L - ARC LENGTH | |
| LB - LICENSED BUSINESS | |
| NO. - NUMBER | |
| O.R.B. - OFFICIAL RECORD BOOK | |
| P.B. - PLAT BOOK | |
| PGS - PAGE(S) | |
| PSM - PROFESSIONAL SURVEYOR AND MAPPER | |
| R - RADIUS | |
| R/W - RIGHT-OF-WAY | |
| W.U.E. - WATER UTILITY EASEMENT | |